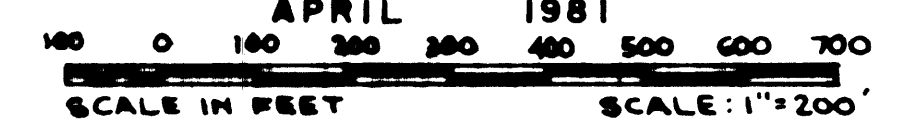


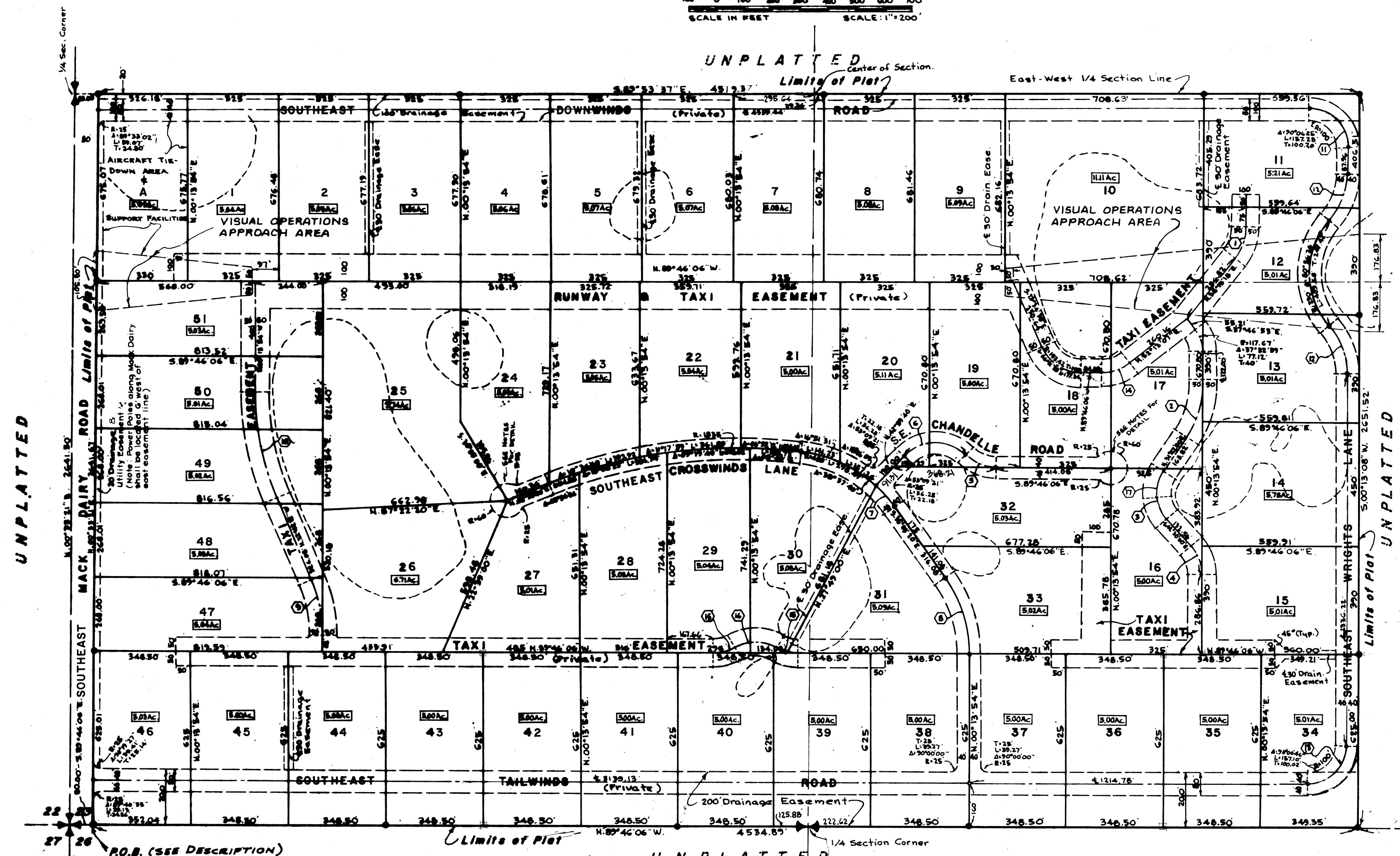
COLONY PARK

IN PART OF S1/2 OF SEC. 23, TWP. 40 S., RGE. 41 E.
MARTIN COUNTY, FLORIDA

GEE & JENSON
ENGINEERS-ARCHITECTS-PLANNERS, INC.
WEST PALM BEACH, FLORIDA
APRIL 1981

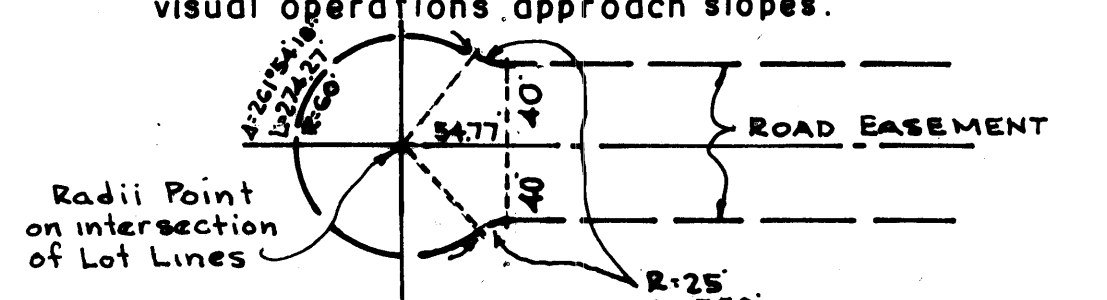


SHEET 2 OF 2
I, LOUISE V. ISAACS, Clerk of the CIRCUIT COURT of MARTIN COUNTY, FLORIDA, HEREBY CERTIFY that this PLAT was FILED for RECORD in PLAT BOOK 8 PAGE 76, MARTIN COUNTY, FLORIDA, PUBLIC RECORDS, this day of _____, 1981.
LOUISE V. ISAACS
CLERK of the CIRCUIT COURT
MARTIN COUNTY, FLORIDA
By: _____
Deputy Clerk
FILE NO. _____



NOTES

- denotes Permanent Reference Monument.
- denotes Permanent Control Point.
- Bearings shown herein are relative to the South Line of Section 23 bearing N.89°46'06"W.
- denotes Approx. Limits of Seasonal Wet Areas.
- All Areas within Plat Limits shown as Roads are Easements.
- There shall be a 10 foot utility easement adjacent to all lot lines not affected by road, taxi and runway easements.
- There shall be no above ground utilities placed within runway and taxi easements or penetrating the visual operations approach slopes.



TYPICAL CUL-DE-SAC EASEMENT

The Lots shown will not be subdivided or altered, except to make larger Lots.

No natural or man-made structure is permitted to penetrate the visual operations approach area at a 20:1 slope. Inner elevation is equal to the runway elevation of 18.7' and outer elevation is equal to 68.7'.

CURVE DATA
DENOTES CURVE NUMBER & LOCATION

①	②	③	④	⑤	⑥	⑦	⑧	⑨	⑩	⑪	⑫	⑬	⑭	⑮	⑯	⑰
R: 174.14'	R: 354.95'	R: 115.03'	R: 153.37'	R: 150'	R: 150'	R: 480'	R: 465.47'	R: 492.89'	R: 985.76'	R: 140'	R: 270'	R: 140'	R: 145.16'	R: 150'	R: 150'	R: 159.73'
Δ: 38°01'24"	Δ: 31°28'06"	Δ: 42°43'54"	Δ: 42°43'54"	Δ: 46°47'40"	Δ: 39°31'54"	Δ: 11°57'00"	Δ: 35°17'14"	Δ: 22°56'15"	Δ: 22°56'15"	Δ: 90°06'45"	Δ: 40°28'16"	Δ: 90°00'46"	Δ: 38°00'47"	Δ: 29°55'35"	Δ: 59°51'10"	Δ: 31°28'06"
L: 115.56'	L: 154.95'	L: 85.79'	L: 114.38'	L: 121.20'	L: 244.84'	L: 100.11'	L: 288.52'	L: 197.37'	L: 394.64'	L: 220.15'	L: 190.71'	L: 219.94'	L: 96.30'	L: 78.35'	L: 156.69'	L: 87.79'
T: 60.00'	T: 100.00'	T: 48.00'	T: 60.00'	T: 64.15'	T: 159.54'	T: 50.24'	T: 145.00'	T: 100.00'	T: 200.00'	T: 140.25'	T: 99.53'	T: 140.03'	T: 50'	T: 40.09'	T: 84.34'	T: 45.00'